

# EVERHOT

GLASSLINED WATER HEATER  
*Italian Technology*

SPECIALLY  
DESIGNED  
FOR VILLA'S



Since 1975

# EVERHOT

## 200 & 300 GLASSLINED WATER HEATER VERTICAL FLOOR STANDING

### Unvented Mains Pressure Hot Water Cylinder - Glass Lined

The Everhot Glasslined 200 & 300 Litres, are vertical floor standing hot water storage cylinders, with electric heating elements. Using advanced technology and unique manufacturing techniques the Everhot Glasslined offer copious amounts of hot water.

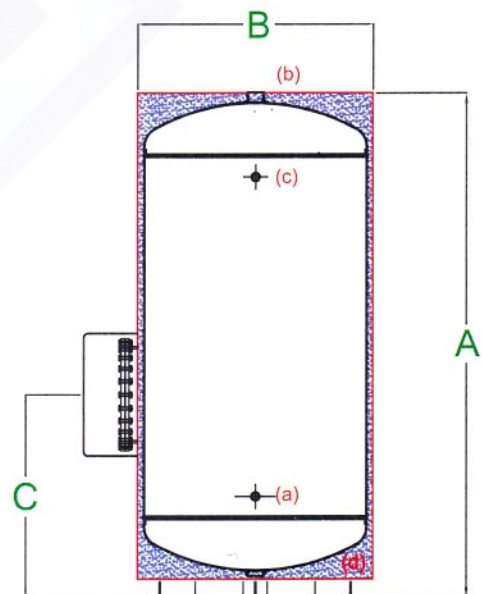
The quality steel cylinder tank is lined internally with an exclusive type of vitreous enamel coating (Glass Lining). A magnesium anode protects against corrosion and the environmentally sound thermal tank insulation is also highly efficient against standing heat loss.

#### FEATURES & BENEFITS:

◆ Fast reheatings	◆ Magnesium anodes.
◆ Compact design	◆ Built-in immersion heaters.
◆ Environmentally sound with highly efficient thermal insulation.	◆ Double Safety Thermostat
◆ Glass lined steel tank, tested to 12 bar pressure.	◆ Twin Function Safety Valve
◆ Vitreous enamel coating.	◆ PU foam insulation

#### 5 Year Manufacturers Guarantee (1 Year Electrical Components Guarantee).

Model No	FEH05 200VFM	FEH05 300VFM
CAPACITY IN LTRS	200	300
POWER IN KW	3.6	4.5
VOLTS	220/400	220/400
HEATING TIME (at 45° C)	2Hr. 15mins	4Hrs.
MAX SETTING TEMP	72	72
MAX. WORKING PRESSURE	8 bar	8 bar
INSULATION THICKNESS IN MM	30	30
PROTECTION	IP 25D	IP25D
WEIGHT IN KGS.	45	54
"A" OVERALL HEIGHT	1100	1410
"B" DIA	605	605
"C" HEIGHT	475	565



#### VERY IMPORTANT



a)	Inlet 3/4"
b)	Outlet 3/4"
c)	Return 3/4"
d)	Drain 1 1/4"



Manufactured by  
**AL HURAIZ ESTABLISHMENT FOR INDUSTRY (EVERHOT DIVISION)**  
P.O.Box. 10159, Dubai, UAE

Tel: +9714 2671777, 2671553, Fax: +9714 2671375  
Email: everhot@eim.ae Website: www.alhuraizgroup.ae